



CRAFTSMAN



Quaint efficiency for modern lifestyles. Spacious kitchen and dining area with large island/bar perfect for casual or formal dining. Convenient utility room joining kitchen. Large living area provides generous space for family and friends. Master bedroom suite with private bath plus 2 additional bedrooms with a full bath.

## THE LANTANA

- 1,545 sq. ft.
- 3 bedrooms, 2 baths
- Front porch
- Island in kitchen
- Rear dining room



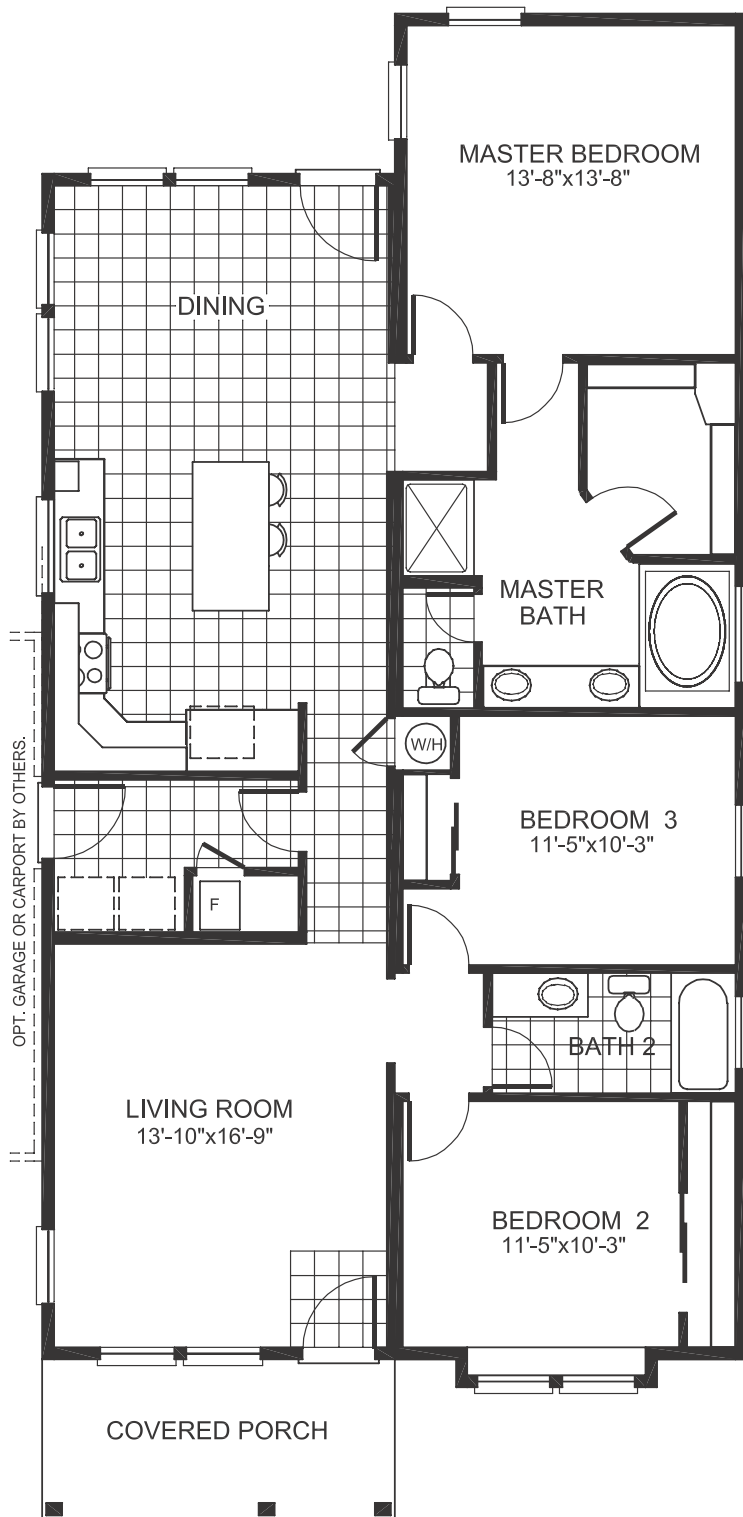
AMERICANA



AMERICANA WITH FULL PORCH

\* Exterior choices may effect home price.

# THE LANTANA



4 bedroom option  
1,975 sq. ft.  
Dimensional area: 45' X 56'

**1,545 sq. ft.**  
**Dimensional area: 30' X 56'**  
**Model: DCQ3 56J3**



**DISCOVERY**  
CUSTOM HOMES  
A DIVISION OF Palm Harbor Homes